



NATIONAL HISPANIC INSTITUTE



THE NATIONAL HISPANIC INSTITUTE
CORDIALLY INVITES YOU TO THE
2019 6-DAY GREAT DEBATE



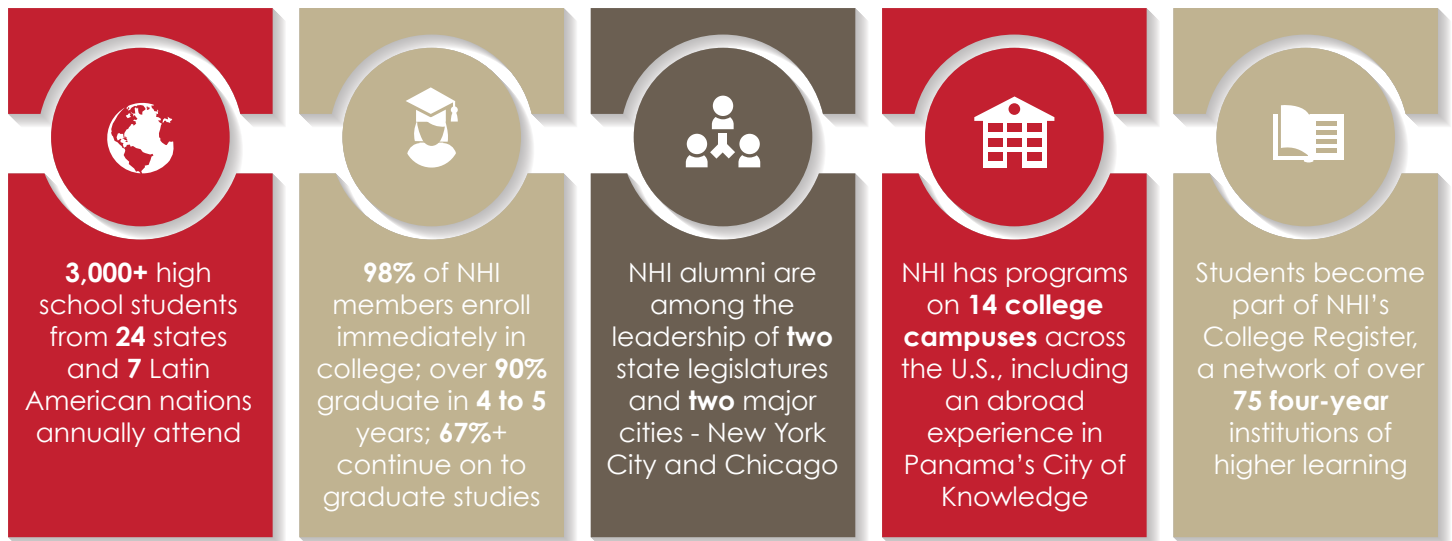
WHAT DOES NHI DO?

Annually, NHI hosts innovative and exciting learning experiences that challenge high school age youth to be imaginative, inventive, and forward-thinking in their views regarding the future Latino community. These students attend week-long summer experiences where they get to know each other both as successful future professionals and community leaders. Numerous graduate articles including two doctoral studies have evaluated the powerful, positive impact of NHI's leadership models. Parents, teachers, education organizations, college preparatory non profits, and top universities have endorsed NHI programs since the early 1980s.

WHO STARTED NHI?

Ernesto Nieto and Gloria de León, husband and wife team, founded the National Hispanic Institute (NHI) 38 years ago in Austin, Texas. It was their vision to establish summer leadership experiences for the caliber of young people with the potential and drive to eventually become people of influence and leadership in Latino community life. They not only wanted to support young people dedicated to making strong grades in high school, but they also wanted to influence young minds capable of becoming change agents in society.

NHI BY THE NUMBERS



ABOUT YOUR NOMINATION

Innovative, courageous, and driven are words often used to describe the graduates of the Summer Leadership Series of NHI. Annually, we conduct a search in target areas of the Americas to identify only the brightest and most talented youth of these communities and invite them to become members of NHI. Nominees for participation in one of NHI's summer programs can feel very proud that someone, a school teacher, counselor, or administrator, has taken notice of their potential. **More than just great students, NHI nominees are identified as potential leaders of their schools, communities, cities, and beyond.**

At NHI's summer leadership programs, students will be surrounded with only the highest caliber of mentors who will attend, are enrolled, or have graduated from some of the best colleges and universities in the country. NHI members enroll in college at a rate of 98% and graduate from their undergraduate studies in 4-5 years at a 90% rate. NHI welcomes the 2018 class to the network of over 100,000 members that, over the 38-year history of this organization, have come together to shape the face of the Americas.



ABOUT THE 6-DAY GREAT DEBATE

As the National Hispanic Institute's introductory community leadership experience, the Great Debate gives high school freshmen a platform to test their abilities against equally competent peers in the world of communications. The training increases students' verbal abilities and critical thinking capacities, and in doing so, starts them on to a path to leadership.

The 6 Day Great Debate experience consists of two parts. The first concentrates on training in the areas of critical thinking, thought expression, concept formation, reasoning, public speaking and argumentation. Training is guided by certified NHI alumni who serve close to 1,000 annual participants in their volunteer capacities. The 6 day experience culminates in a tournament that allows students to test, assess, evaluate and showcase all that they have learned while at the program.

Participants of the Great Debate can continue their involvement and learning experience with NHI after the program by choosing to serve as student ambassadors back home and/or by choosing to be trained as returning junior staff members to help prepare the next generation of students.



Comfort and confidence in competitive and intellectual environments



Develops critical thinking and communication skills



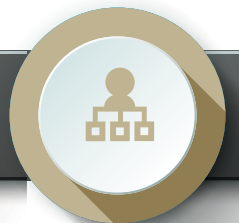
Increase exposure and knowledge of social, cultural, economic, and political issues



Advance language and writing skills as a key to achieve academic success



Ability to organize and lead through NHI's volunteer opportunities



2019 PROGRAM SITES

Texas Star Great Debate

Schreiner University
Kerrville, Texas
Early July 2019



Midwest Great Debate

Augustana College
Rock Island, Illinois
Mid July 2019



Northeast Great Debate

Philadelphia, PA Area
Late July 2019



ENROLLING IN THE GREAT DEBATE

To apply to the 2019 GD, an applicant must be a 2018-2019 high school freshman (9th grade) with a 3.0 / 85% GPA in core subject matter. Students must submit (upload/e-mail/fax) their latest report card. NHI will accept a final report card from their previous year for admission purposes.

APPLICATION SUBMISSION

Students may apply at:

<https://www.nationalhispanicinstitute.org/apply/-summer2019/>. Select your program and submit a \$20 USD application fee via credit-debit card or e-check.

APPLICATION DEADLINES

October 31, 2019 or until program is at capacity.

SCHOOL & COMMUNITY SPONSORS

Parents and student applicants are encouraged to visit with their respective schools, local businesses and civic organizations to seek financial support. NHI is a private, 501(c)3 non profit organization that provides tax receipts to donors. In cases where the schools and/or sponsors provide support, either entirely or partially, NHI will reimburse families for funds they have submitted towards a student's registration fee after they have attended the Great Debate.

CONTACT INFORMATION

National Hispanic Institute

P.O. Box 220

Maxwell, TX 78656 USA

Phone: 512-357-6137

Fax: 512-357-2206

e-mail: gd@nhimail.com

www.nationalhispanicinstitute.org



TUITION AND FEES

All students who apply to NHI programs and earn admission are automatically provided with a 50% scholarship that goes towards the actual cost of the Great Debate.

These scholarships are the result of the volunteer services provided by NHI alumni who assist with the Great Debate, plus the generosity of host colleges and universities that underwrite student housing, food, and facilities. The amount paid by families represents only half the cost to attend.

The Great Debate rate for families is \$675 USD, which includes a \$20 application processing fee. This amount covers meals, housing, materials, and the Great Debate tuition. Once the student receives notice of admissions via email, s/he has 10 days to make a \$150 USD security deposit. All tuition is due in late October. Students can make tuition arrangements with NHI's business office for an alternate payment plan. Travel costs to and from the program are not included. NHI provides local airport pick-up and drop off for \$45 per person.

Other costs may include the book, *Third Reality; Crafting a 21st Century Latino Agenda* (\$15 on smashwords.com), spending money for snacks, and optional NHI/University merchandise.

FROM THE FOUNDER

While schools work hard to prepare our young people for the work force, we as parents and community leaders know that this is not nearly enough. If we expect more from our young minds, they need much more development than what a regular school day provides. Educators know this all too well. NHI was established to engage our future leaders in learning experiences that are culturally receptive and supportive in environments that stimulate thinking to higher, more complex levels, and with the intent of conveying a highly important social message to our young people. Students need to see themselves as representing important value to our future as a community and critical to the quality of lives we all wish for ourselves and those to come.

SPECIAL THANKS TO OUR COLLEGE REGISTER MEMBERS

- Adams State University • Amherst College • Arcadia University • Augustana College • Austin College • Bates College
- Baylor University • Bryant University • Cabrini University • Case Western Reserve University • Colby College
- Colorado Mesa University • Colorado State University - Fort Collins • Colorado State University - Pueblo • Cornell University
- Drake University • Earlham University • Elmhurst College • Emory University • Florida International University
- The George Washington University • Georgia Institute of Technology • Howard Payne University • Iowa State University
- Marquette University • Miami University (Ohio) • Michigan State University • National Catholic College Admission Association
- New York University • Northwestern University • Nova Southeastern University • Oakland University • Oberlin College
- Our Lady of the Lake University • Penn State University • Purdue University • Saint Joseph's University • Saint Leo University
- Society of Actuaries • Southwestern University • Southern Methodist University – Lyle School of Engineering • Southwestern University
- Stanford University • St. Mary's University • Swarthmore College • Texas A&M University • Texas Tech University • Trinity College
- Trinity University • Tulane University • University of Colorado Boulder • University of Denver • University of Houston • University of the Incarnate Word • University of Minnesota • University of New Mexico • University of North Texas • University of Northern Colorado
- University of Oklahoma • University of Pennsylvania • University of Pittsburgh • University of Richmond • University of Rochester
- University of San Diego • University of San Francisco • University of Tampa • University of Texas at Arlington • University of Texas at Austin • Vanderbilt University • Villanova University • Washington University in St. Louis • Wheaton College • Yale University